



*Anopheles albimanus* Wiedemann (Nyssorhynchus)

**Strain Name:** STECLA, MRA-126

**Place of Origin:** Santa Tecla, El Salvador

**Colonization date:** 1974

**Established by:** Dr. Jack Seawright

**Deposited by:** Dr. Jack Seawright

**Genotype:** no information

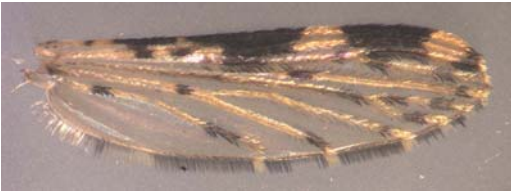
**Phenotype:** no information

**Karyotype:** undefined

**Insecticide Resistance:** none

---

**Adult Morphological Traits**



Morphological characteristics of *An. albimanus* adults.

**Authentication Methods used to confirm stock identity**

1. Examined adults microscopically for morphological characters: all individuals had standard features of *An. albimanus*.

**References referring to this stock:**

Lobo, N. F., J. R. Clayton, et al. (2006). "High efficiency germ-line transformation of mosquitoes." *Nature Protocols* 1(3): 1312-1317.